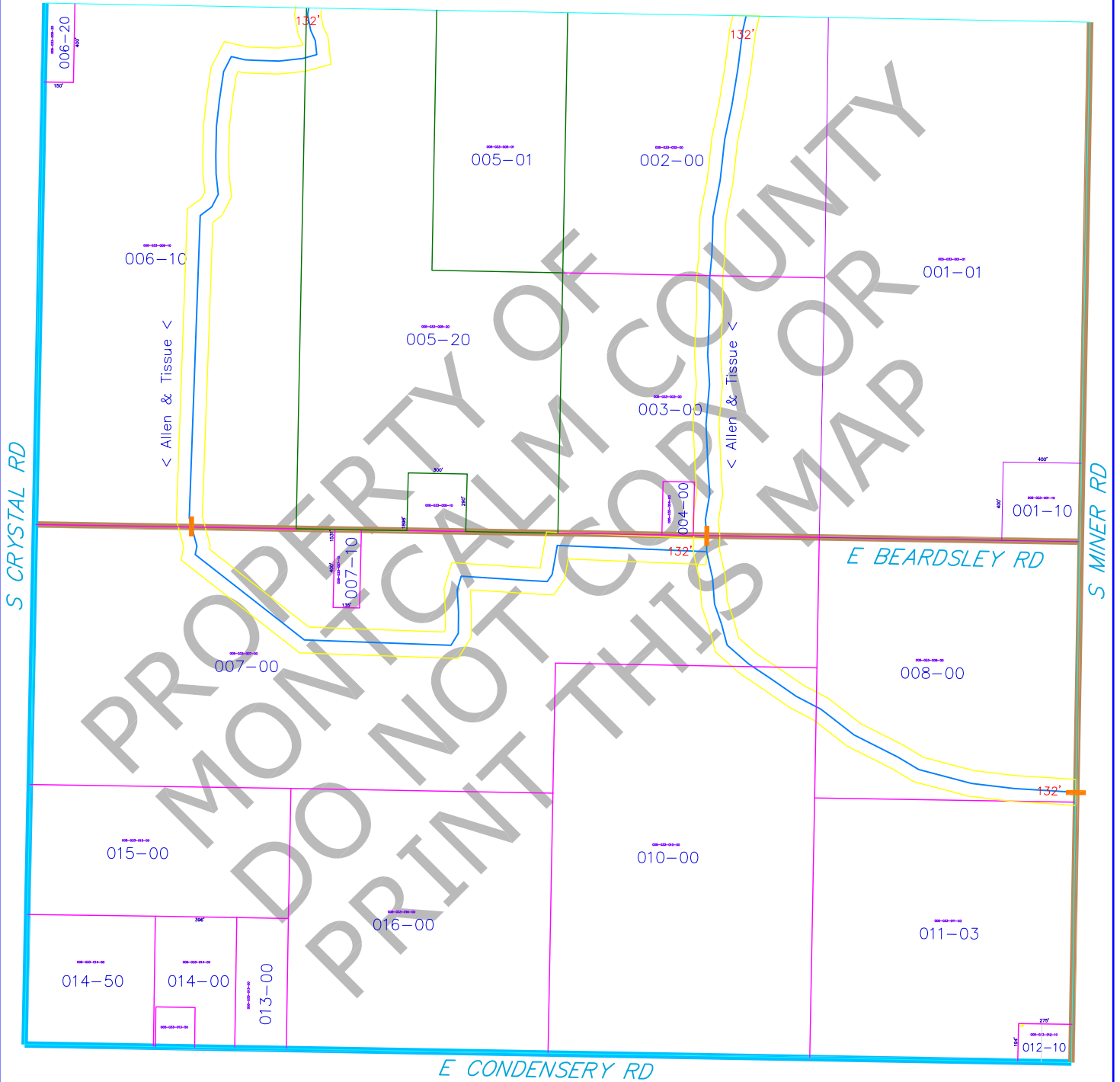


CRYSTAL TOWNSHIP SECTION 33
59-005-033



MONTCALM COUNTY
Equalization Department

LAND INFORMATION
DRAWING REVISED 3/29/2010
THIS DRAWING IS NOT FOR LEGAL PURPOSES

LEGEND

- STATE HIGHWAYS
- COUNTY PRIMARY ROADS
- COUNTY LOCAL ROADS
- TREE LINE
- PINE TREE LINE
- SWAMP LINE
- WATER WAY

