

MONTCALM COUNTY RECREATION PLAN

2008-2012

**PREPARED BY:
MONTCALM COUNTY PARKS AND RECREATION
COMMISSION WITH THE ASSISTANCE OF THE
WEST MICHIGAN REGIONAL PLANNING COMMISSION**

TABLE OF CONTENTS

Introduction	1
Community Description	2
Administrative Structure	4
Montcalm County Board of Commissioners	4
Montcalm County Parks and Recreation Commission	4
Montcalm County Budget	4
Staff and Volunteers	5
Public School Districts	5
City, Village, and Township Parks	6
Recreation Inventory	7
Montcalm County Parks	7
Artman Park	7
Camp Ford Lincoln Park	7
Krampe Park	8
“Bill” McCarthy Park	8
Schmied Park	9
Flat River Nature Park	9
Recreation Grant History	9
Accessibility Evaluation	11
Community Facilities	12
Trails in Montcalm County	13
Festivals and Events	13
Historic Sites	14
Golf Courses	14
State Game Areas in Montcalm County	14
Campgrounds	15
State Recreation Areas	15
Access Sites in Montcalm County	16
Ski Areas in Region 8	16
Description of Planning and Public Input Process	17
Public Input Process	19
Goal Prioritization Workshop & Goals/Actions	19
Public Hearing	18
Action Program	25
Conclusions	34

Introduction

Montcalm County has established the importance of recreation to the County's quality of life by maintaining an up-to-date Recreation Plan. The County developed a recreation plan in 1997, updated the plan in 2003, and continues the process with this updated plan.

This Plan represents the ideas of the County's officials and residents through meetings, an "Issue Identification" Workshop, and a public meeting to review a draft of the Plan. The planning process was a combined effort of the County's Recreation Commission, County officials, interested citizens, and the West Michigan Regional Planning Commission.

The Action Plan provides a schedule for completing a number of improvements. The County should strive to follow the established schedule, but should consider the schedule as a "living document" since funding opportunities and other events may not exactly mesh with the schedule. The integrity of the plan will not be compromised if actions are rescheduled during the five-year planning period.

Finally, this plan should be a working document that is frequently used for guidance and updated if necessary. The next complete update of the Plan should occur in 2012.

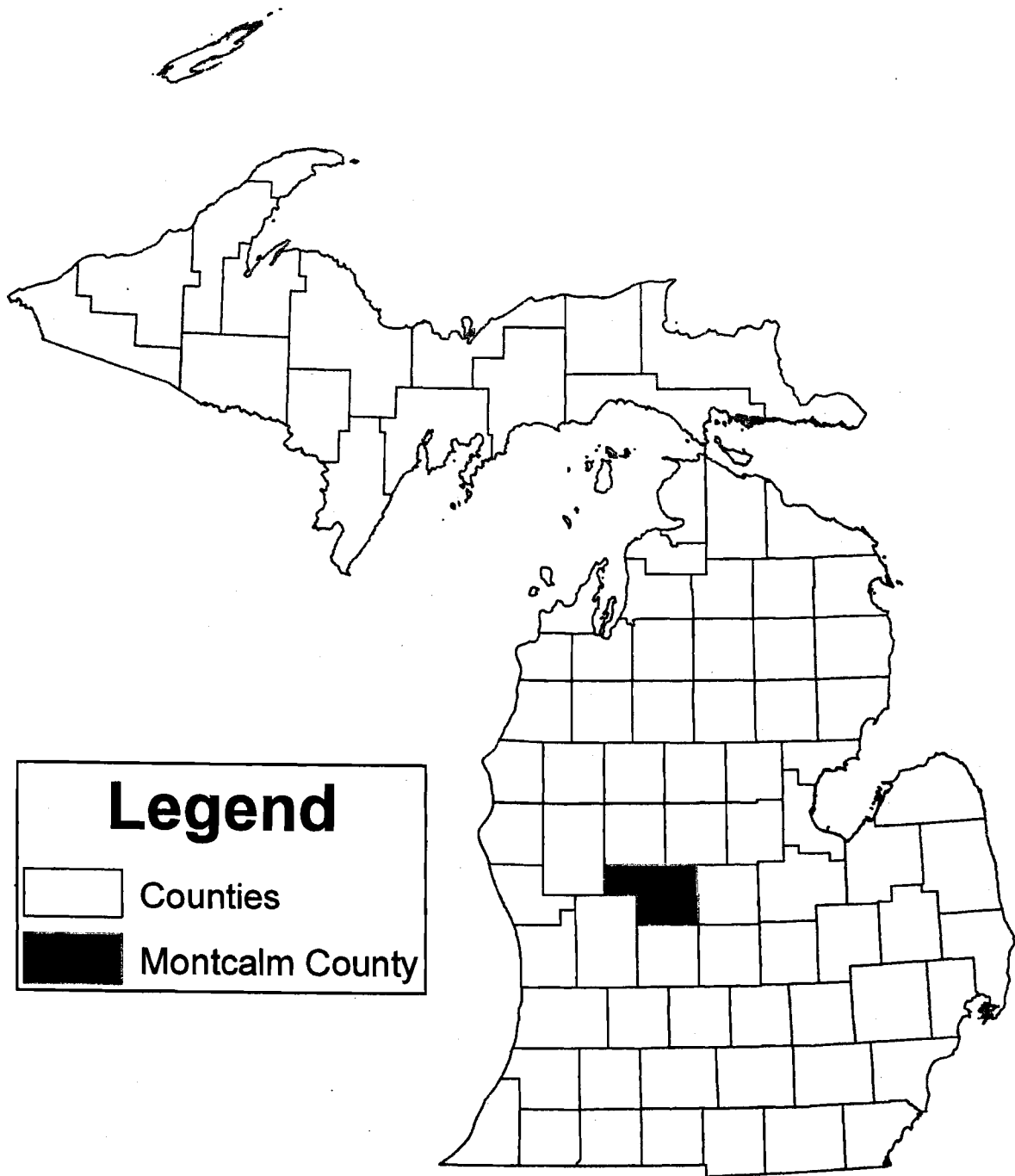
Community Description

This recreation plan was prepared for Montcalm County. In addition to county-wide information, additional information is included for many of the communities within Montcalm County to provide a more complete description of recreation opportunities. Montcalm County is located in central Michigan (Map 1) and contains three cities, six villages, and 20 townships.

The plan focuses on providing recreation opportunities to residents of the County through the acquisition, development, and maintenance of county-owned parks. The plan also allows for the coordination of local units of governments' recreational programs and activities.

Supplemental information describing the County's physical and social features is included in Appendix A to allow people to see the information and to meet the new guidelines for Recreation Plans.

Map 1 Montcalm County Location Map



Administrative Structure

The County's residents are the final authority in the County since they elect the County Board of Commissioners, which must approve of any major improvements to the County's parks. The County's recreation-related planning activities are undertaken by the Montcalm County Parks and Recreation Commission, which is comprised of both elected and appointed members. The County Board of Commissioners and the Montcalm County Parks and Recreation Commission are identified below:

Montcalm County Board of Commissioners

- Marcia Walker, District #1
- Dan Petersen, District #2
- Ronald Retzloff, District #3
- John M. Johansen, District #4
- Carl A. Paepke, District #5
- Ron Baker, District #6
- Patrick Q Carr, District #7
- Roger Caris, District #8
- John McCrackin, District #9

Montcalm County Parks and Recreation Commission

- Michael Balars
- Steve Book
- Donald Cooper
- Albert Hackbart
- Carl Mapes
- Don McCracken
- Bruce Noll
- Carl Paepke
- Sally Thomsen
- Marcia Walker
- Franz Mogdis

Montcalm County Budget

Montcalm County adopts a budget each year covering its fiscal year, which runs from October 1 through September 30 each year. Table 1 lists the revenues and expenditures.

In 2007 the adopted budget lists revenues of \$18,707,070.92. These revenues come from taxes (46.2 percent), charges for services (16.9 percent), the fund balance from the previous year (12.8 percent), intergovernmental (8.1 percent), and other revenue sources such as licenses, permits, fines, etc.

The 2007 budget lists expenditures of \$16,412,841.30 and a fund balance of \$2,294,229.62 (slightly less than the fund balance from 2006). Major expenditures include public safety (30.5 percent), general government (28.5 percent), appropriations (22.1 percent), judicial (12.9 percent), and other expenditures including public works, health & welfare, debt service, and economic development.

Montcalm County's 2007 budget list a total of \$36,279.61 for parks and recreation. This figure includes administrative costs, supplies, insurance, contracted services, building repair, equipment repair, and grounds maintenance. This is an increase from the 2006 budget-year of \$3,308.61.

Montcalm County Recreation Plan – 2008-2012

Table 1: Montcalm County Budget Information

Category	2006 Budget	2007 Budget
Revenues		
Taxes	8,483,256.00	8,650,100.00
Charges for Services	2,977,287.00	3,153,300.00
Fund Balance	2,490,883.00	2,401,776.02
Intergovernmental	1,252,665.00	1,511,874.00
Other Revenue	256,680.00	306,161.74
Interest & Rents	205,615.00	282,515.00
Licenses & Permits	136,500.00	131,500.00
Fines & Forfeits	145,350.00	120,150.00
Other Financial Sources	2,645,521.00	2,149,694.16
Total Revenues	18,593,757.00	18,707,070.92
Expenditures		
Public Safety	4,604,083.12	5,007,624.57
General Government	4,345,473.17	4,617,662.05
Appropriations	4,398,144.48	3,625,890.88
Judicial	2,021,174.98	2,114,682.08
Health & Welfare	185,955.00	202,455.00
Debt Service	33,200.00	199,730.00
Legislative	151,982.23	159,381.63
Public Works	109,755.00	114,800.00
Economic Development	56,961.00	27,615.09
Capital Outlay	0.00	0.00
Other	285,252.00	289,000.00
Total Expenditures	16,191,980.98	16,412,841.30
Fund Balance	2,401,776.02	2,294,229.62

Source: Montcalm County

Staff and Volunteers

The County assigns 0.4 full time equivalent (FTE) employees to maintain the County’s six parks. The County welcomes volunteer efforts, but does not rely on such efforts to maintain or improve the parks.

Public School Districts

Montcalm County is served by several school districts. A list of the Districts, with schools within Montcalm County is shown below. At this point in time, there is very little interaction between the schools and the County’s park system.

Carson City-Crystal – High School, Middle School, and elementary school located in

Montcalm County Recreation Plan – 2008-2012

Carson City, and an elementary school located in Crystal.

Central Montcalm – High School, Middle School, Grades 4-6 School, and Grades K-3 School located in Stanton; Grades K-3 School also located in Sheridan.

Greenville – High School, Middle School, and three Elementary Schools located in Greenville. One elementary school located in Kent County's Oakfield Township.

Lakeview – High School, Middle School, Grades K-2 School, and Grades 3-5 School located in Lakeview.

Montabella – High School, Middle School, (5-8) located on North County Line Road; Grades 1-4 School located in Blanchard (Mecosta County) and P-K school located in Edmore.

Tri County – High School, Middle School, Grades 4-5 School and K-3 School located on Kendaville Road in Pierson Township; Grades K-5 School located in Sand Lake (Kent County).

Vestaburg – High School, Middle School, and Elementary School located in Vestaburg.

City, Village, and Township Parks

There are many parks maintained by the cities, villages, and townships within the County. There is no formal relationship established between the various recreation providers. See the recreation inventory for a list of parks in the various communities.

Recreation Inventory

Montcalm County Parks

Montcalm County maintains five parks that serve a variety of needs and recently acquired a sixth site on the Flat River for development. A description of the six sites follows.

Artman Park – This park is located in Reynolds Township (Section 28) at the intersection of M-82 and Amy School Road. The 30-acre park has a variety of features oriented toward passive recreation activities. Tamarack Creek flows through the park and provides a peaceful natural feature for park users. Facilities include new vault-toilets that are handicap-accessible, 16 picnic tables, a pedestrian bridge, and gravel parking. Landscaping includes many large trees and a large well-maintained grassy area. Access control consists of a gate to block automobile access after the posted hours. Signage includes a park sign and a posting of the park’s rules. A surveillance system is in-place at the park. Amy School Road divides the park into two areas.

Surrounding land uses include open space, forested areas, and low-density residential.

Strengths of the park include its easy access from M-82 and US-131. The water features and the large trees also are great assets. The park’s primary weaknesses include the limited facilities available and noise from the adjacent highway (M-82).

Summary of features: 30 acres, 16 picnic tables, restrooms, gravel parking.

Camp Ford Lincoln Park – This unique facility is located in Cato Township (Section 1) near the County’s northern boundary on Schmied Road. The camp is located on Townline Lake. The camp facilities are available through Montcalm County on a reservation basis. The Camp includes two lodging-cabins that include “barracks style” beds. The two older sleeping facilities are older wooden structures. A newer brick dining facility includes a large dining area, complete kitchen facilities, restrooms, and shower facilities. A recent addition to the park includes a new single-unit cabin that sleeps 12, is heated for year-round use, and has a variety of amenities including electricity, a refrigerator, and a microwave oven. The camp has a picnic shelter and 13 picnic tables, four grills, a grass volleyball court, a swimming area with a wooden pier, outdoor lighting, swings, some paved pathways, and gravel parking. Landscaping includes many mature trees and large grassy areas. Surrounding land uses include lakeside cottages and homes. There is no signage identifying the site. Access management includes a four-foot high chain-link fence surrounding the site.

Strengths of the camp include its beautiful lakefront location, the quiet of the surrounding area, the landscaping, and the unique camping experience. Weaknesses relate to the lack

of signage identifying the site as a County Park, and the general condition of the two older wooden cabins.

Summary of features: three acres, lodging cabins (one year-round), dining hall/kitchen, swimming area, lakefront site, picnic shelter, restrooms, showers, and water.

Krampe Park – This park is located in Winfield Township (Section 34) near the intersection of Church Road and Amble Road. The 20-acre park has a variety of features oriented towards picnics and other passive recreational activities. The park is located on Winfield Lake and provides both fishing and boating access. The park has a picnic shelter and 30 picnic tables, seven grills, paved pathways, gravel parking with paved areas for handicap-accessible parking, vault-toilets (handicap-accessible), and two sets of horseshoe pits. There is a playground with eight swings and a new playground structure. A gate to limit automobile access after hours is at the entrance and lighting for security is also on-site. A surveillance system is in-place. Signage includes a park sign and a posting of the park's rules. Landscaping includes many mature trees, and a well-maintained grassy area for picnics and other activities.

Surrounding land uses include residential homes and cottages, forested areas, and agriculture.

Strengths of the park include its quiet peacefulness, access to Winfield Lake, rolling topography, a larger variety of activities, and the many mature trees. The only weakness relates to the park's isolation, which makes it difficult to find and limits awareness of the facilities. The location also makes patrolling the park difficult.

Summary of features: 20 acres, picnic shelter, restrooms, 30 picnic tables, lake access, playground equipment, on-site water.

“Bill” McCarthy Park – This 26-acre park is located in Montcalm Township (Section 4) on M-91. The Flat River passes along the western edge of the park. The park's primary emphasis is group gatherings/picnics. The park has two small picnic shelters, one large picnic shelter, and 100 picnic tables. The park also has nine grills, accessible vault-toilets, water, four swings, and a new play structure. The park is set in a forested area with well-maintained grassy areas. Signage identifies the park. There are gates that can be closed to limit automobile access. Parking consists of gravel areas, with some paved parking for handicap-accessible sites. There are also paved pathways through portions of the park. A surveillance system is in-place. Surrounding land uses include forested areas and low-density residential.

Strengths of the park include its visibility from M-91, the mature trees, access to the Flat River, and the capacity of the facility to serve large groups. The only weakness relates to noise from M-91, which is minimal.

Montcalm County Recreation Plan – 2008-2012

Summary of features: 26 acres, three picnic shelters, 100 picnic tables, restrooms, playground equipment, and on-site water.

Schmied Park – This four-acre park is located in Belvidere Township (Section 6) at the corner of Robin and Caroline streets, south of North County Line Road. This park, like Camp Ford Lincoln Park, is located on Townline Lake. The park contains a variety of facilities including four picnic tables, three grills, four swings, a play structure, vault-toilets, a basketball hoop, and paved parking. Security lighting is present. Lake access includes a swimming area. Landscaping includes many large trees and well-maintained grounds. The park has adequate signage and has no access control. A surveillance system is in-place. Surrounding land uses are residential homes and cottages.

The park's strengths include its location on the lake, its peacefulness, its many large trees, and the overall condition of the park. The only weakness relates to its isolated location.

Summary of features: Four acres, four picnic tables, lake access, playground, paved parking, vault-toilets.

Flat River Nature Park – This 62 acre site is located in Section 19 of Montcalm Township. The site, which is currently under development, provides 4,200 feet of frontage on the Flat River on a portion of the River that is good for canoeing and fishing. Currently there is a trail laid out, 20 parking spaces (gravel), a fence around the parking area, and other improvements are in-progress. The site is ideal for many activities that were cited by citizens in a 2001 countywide survey to determine recreation interests – including picnics, fishing, walking/running, camping, and canoeing/boating.

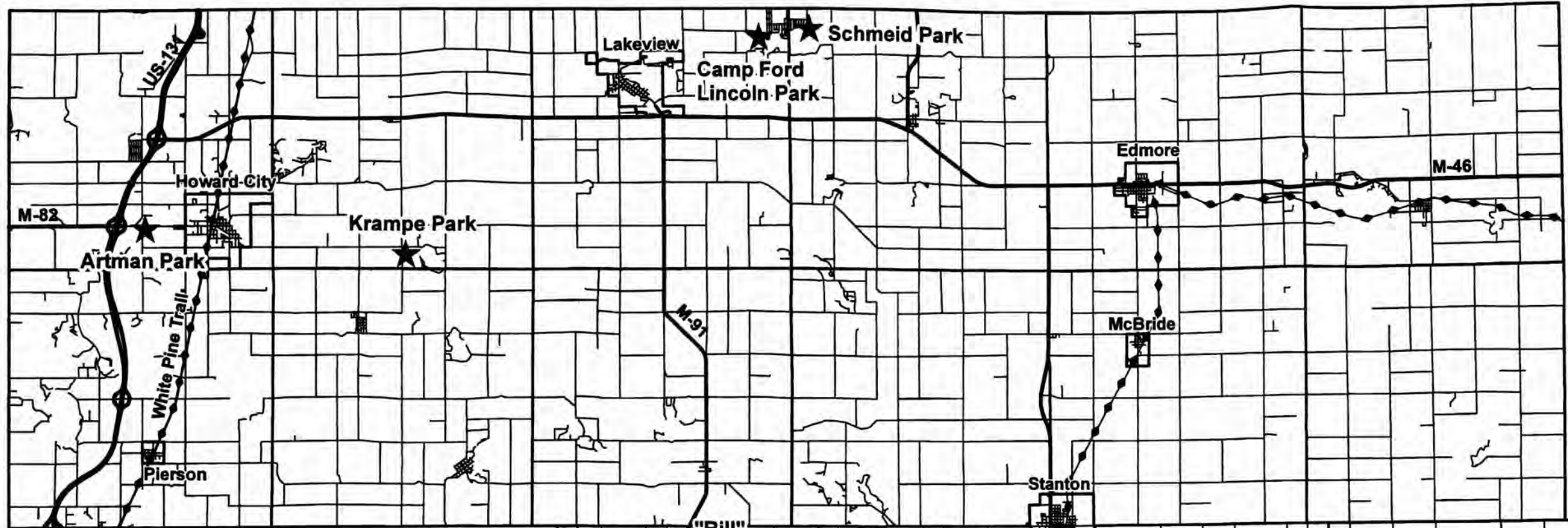
Recreation Grant History

Montcalm County has received several grants in the past.

- In 1992 the County received a grant for Project Number BF92-184 that involved renovations to three parks: McCarthy Park, Krampe Park, and Schmied Park. The grant totaled \$135,000 and is closed.
- In 1998 Montcalm County received a grant for Project Number BF98-216 that included adding 30 picnic tables and two handicap accessible restrooms at Artman Park. The grant totaled \$17,940 and is closed.
- In 1999 Montcalm County received a grant for Project Number CM99-100 that included two pavilions and parking in McCarthy Park. The grant totaled \$18,630 and is closed.
- In 2007 Montcalm County applied for a MNRTF grant to build a handicap accessible fishing pier in Krampe Park. The application was approved in December 2007 by the MNRTF Board and will result in the construction of the fishing pier in 2008.

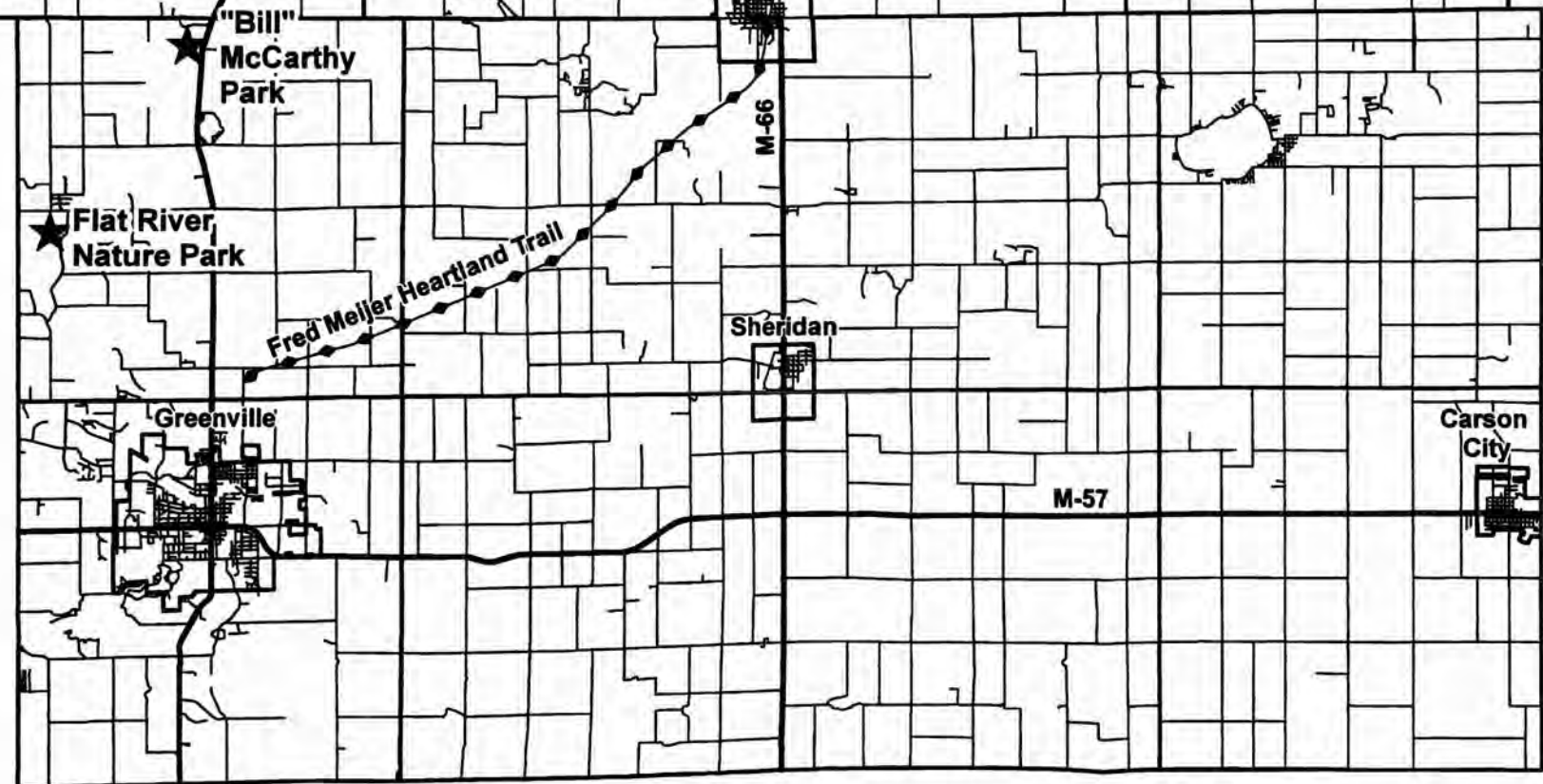
Map 2

Montcalm County Recreation Plan County Parks



Legend

-  City & Township Boundaries
-  Highways
-  Roads
-  Bicycle Trails
-  County Parks



Accessibility Evaluation

When performing inventories of each of the parks, the West Michigan Regional Planning Commission identified other issues related to safety and accessibility. These issues are listed below for each park.

Camp Ford Lincoln Park – This camp has room for improvements related to handicap-accessibility. There are currently no designated parking spaces. The living quarters and restrooms are not easily accessible, and there are hazards associated with the water area.

Recommendations: When developing new cottages for the park, care should be exercised in designing the facilities to meet the varied needs of people with different physical capabilities. Entrances should be at-grade and passageways should meet standards. Improvements to the waterfront should focus on railings and grade improvements. Parking should be designated and additional pathways should be developed.

Artman Park – This park does not have many developed facilities of any kind, so access to developed facilities is not limited. There are no designated parking spaces and no pathways to Tamarack Creek. The restrooms are accessible.

Recommendations: If additional facilities are developed, designs should incorporate accessibility.

Krampe Park – This park provides adequate facilities to meet the needs of most handicapped residents and visitors. One exception relates to access to the lake.

Recommendations: Access to Winfield Lake could be improved with the addition of a paved pathway and fishing pier.

“Bill” McCarthy Park – This park provides adequate facilities to meet the needs of most handicapped residents and visitors.

Recommendations: Access to the Flat River could be improved with the addition of a paved pathway.

Schmied Park – The park lacks designated handicap-parking. The restrooms are not as accessible as the other County parks. While the park has some extreme topography, parking is located near the major facilities. Improving access to the waterfront for fishing would enhance the park’s overall condition. All other facilities are relatively accessible.

Recommendations: Provide designated parking space. Develop paved pathway from parking to lakefront with railings. Improve grades to vault-toilets.

Flat River Nature Park – The site is currently under development.

The Action Program also identifies many of the actions necessary to improve accessibility at the County's facilities.

Community Facilities

In addition to County facilities, there are a number of other opportunities across the County.

- The Montcalm County Conservation District maintains a "Model Forest" in section 17 of Douglass Township. The 70 acre site is not a park, but does have trails, a pavilion and restrooms. The model forest is a demonstration project designed to educate others on selectively harvesting trees.
- Greenville has 11 parks with 140 acres of property. Facilities include public lake and river access, athletic facilities, picnic facilities, and a linear trail through the City for bicycling, in-line skating or other linear activities. Recreation Plan performed in 2005.
- The Village of Lakeview has two village-owned parks totaling three acres that provide. Resources include swimming, playground equipment, picnic facilities, and softball. Recreation Plan performed in 1994.
- Day Township has a drag strip race track
- Montcalm Township maintains two parks with a total of ten acres. Resources include baseball, basketball, picnic facilities, play equipment, and a tennis court.
- Pine Township has two parks totaling eight acres. Facilities include baseball, basketball, an indoor community center, picnic facilities, play equipment, and soccer fields.
- Home Township has one park with baseball, camping, and indoor community center, a tennis court, and picnic facilities.
- Carson City maintains two parks totaling 50 acres. The parks include basketball, fishing, picnic facilities, play equipment, volleyball, and nature trails. The City sponsors Frontier Days the second weekend in June. Recreation Plan performed in 2003.
- The Old Fence Rider's Historical Center is located in Edmore and offers a variety of historical displays including flags, newspapers, and antique barbed wire.
- Crystal Township maintains four parks totaling 28 acres. The parks include active game facilities, access to two lakes, picnic opportunities, and other opportunities in parks ranging from ¼ acre to 19 acres. The Township updated their recreation plan in 2007.
- The Sheridan Area (Village and four townships) performed a recreation plan in 2003 that identifies two parks within the Village totaling four acres and providing water access on Pearl Lake, playground facilities, and picnic opportunities. Bushnell Township maintains a roadside park on M-57.
- The City of Stanton maintains a five acre park with a playground, and facilities for basketball, baseball, tennis, and picnics. The City performed a recreation plan in 2006.
- Pierson Township maintains an access site on Big White Fish Lake. The Township performed a recreation plan in 2003. The Village of Pierson has two parks and is improving one site that was donated by the landfill located in Pierson Township.
- The Village of Howard City has a range of parks and a plan completed in 2001.
- Heritage Village, located in Sidney on the campus of Montcalm Community College, is a historic village established in 1987 that includes a blacksmith shop, schoolhouse, depot, log cabin, and other restored buildings.

Trails in Montcalm County

The County has an extensive, and growing network of trails for bicyclists, runners, hikers, in-line skaters, and other trail users.

The Fred Meijer White Pine Trail (a Michigan State Park) runs from Grand Rapids to Cadillac and passes through the County's panhandle area including the villages of Pierson and Howard City. The Montcalm County portion of the trail is currently not paved, except for six blocks in Howard City. However, there are plans for future improvements that include paving.

The Fred Meijer Heartland Trail (FMHT) is another trail and is operated and maintained by the Friends of the Fred Meijer Heartland Trail, headquartered in Edmore. The trail goes from Greenville, northeast through Stanton and McBride, to Edmore, and then heads east into Gratiot County. This trail, when fully developed, will link with the Fred Meijer Flat River Trail and the extensive network of trails located in the City of Greenville. Currently, 17 miles of the trail are paved from Lake Road on the south to Edmore. When completed, the FMHT will be a 45 mile paved trail from Greenville to downtown Alma.

Festivals and Events

- Artfest, Crystal Lake, 2nd weekend in August
- Clifford Lake Pontoon Boat Parade, Clifford Lake, July 4th Weekend
- Coral Days, Coral, Last Saturday in June
- Crystal Celebration, Crystal Lake, July 4th Weekend
- Danish Festival, Greenville, 3rd full weekend in August
- "Edmorama" is a new festival in the Village of Edmore that is scheduled for the last weekend in August. The festival replaces the long-time State Potato Festival.
- Howard City Harvest Festival is scheduled for September 15, 2007.
- Fiddler's Jamboree, Coral, 2nd Saturday in November
- Frontier Days, Carson City, 1st full weekend in June
- Lakeview Summerfest, Lakeview, middle of June
- Heritage Village Celebration, Sidney, 1st weekend in August
- Ice Cream Social, Coral, Last weekend in July
- Montcalm County 4H Fair, Greenville, July
- Old Fashioned Days, Stanton, 2nd full weekend in August
- Six Lakes Jubilee, Six Lakes, July 4th Weekend
- Springfest, Sheridan, Memorial Weekend

Historic Sites

Historic Sites offer an outstanding opportunity to attract people from outside the area since there are a number of facilities that can be linked into day tours. Montcalm County has ten sites listed on either the state or national registers of historic places. In addition to the sites located on the historic registers, the communities are all hosts to many wonderful homes typical of the 1800’s. Many of the communities’ downtowns also focus on history and have restored storefronts, decorative streetlights, and antique shops for browsing and shopping.

Table 2: Montcalm County State and National Designated Historic Sites

Montcalm County Historic Sites: Names and Addresses	National Register	State Register	Marker
Church, Charles, - Gibson, Frank, House, 301 S. Barry, Greenville	na	1989	na
Clifford Lake Hotel, 561 W. Clifford Lake Dr., Stanton	na	1983	na
Cowden Lake Church of Christ, 4510 Gravel Ridge Rd., Coral	na	1989	na
Ecker, Ambrose, House, 615 Lafayette, Greenville	Na	1988	na
Gibson, Charles, House, 311 W. Washington Ave., Greenville	Na	1991	na
Gilbert, Giles, House, 306 N. Camburn, Stanton	1987	1984	na
Flat River Museum/Greenville Informational Designation, 213 N. Franklin, Greenville	Na	1975	1976
Little Denmark Evang. Lutheran Church, 1031 S. Johnson Rd., Gowen	Na	1985	1986
Saint Paul’s Episcopal Church, 305 S. Clay, Greenville	Na	1992	1993
Winter Inn, 100 N. Lafayette, Greenville	1980	1979	na

Source: Michigan Department of State

Golf Courses

Montcalm County has ten golf courses. A list of the courses follows.

- Birchwood Golf Course, 18 holes, Howard City
- Brookside Golf Course, 18 holes, Gowen
- Crystal Golf Course, 9 holes par 3 and 9 holes par 4, Crystal
- GlenKerry Golf Course, 18 holes, Greenville
- Holland Lake Golf Course, 9 holes, Sheridan
- Molly’s Run Golf Course, 9 holes, Howard City
- Pilgrim’s Run, 18 holes, Pierson
- Po’ Folk Golf Course, 9 holes, Greenville
- The Links of Edmore, 9 holes, Edmore
- Whitefish Lake Golf Course, 18 holes, Pierson

State Game Areas in Montcalm County

- Flat River State Game Area
- Stanton State Game Area
- Langston State Game Area
- Edmore State Game Area
- Vestaburg State Game Area

Campgrounds

There are 14 campgrounds in Montcalm County. A description of these facilities follows.

- Bass Beach Campground, Lakeview
- Belvidere Township Park, Six Lakes
- Camp Thunderhawk Campgrounds, Pierson
- Family Campground, 25 sites, Edmore
- Greenville Campground, Greenville
- Lakeview Campground, 90 sites, Lakeview
- Nature's Chain of Lakes Campground, 31 sites, Six Lakes
- Pleasure Point Campground, 176 sites, Six Lakes
- Red Pines Campground, 30 sites, Carson City
- Snow Lake Campground, 300 sites, Fenwick
- South Shore Campground, Crystal
- Three Seasons Campground, Greenville

State Recreation Facilities (Located near Montcalm County)

- Ionia Recreation Area – Ionia County
- Holland State Park – Ottawa County
- Saugatuck State Park – Allegan County
- Grand Haven State Park – Ottawa County
- Traverse City State Park – Grand Traverse County
- Interlochen State Park – Grand Traverse County
- William Mitchell State Park – Wexford County
- Orchard Beach State Park – Manistee County
- N. Higgins Lake State Park – Crawford County
- S. Higgins Lake State Park – Roscommon County
- Wilson State Park – Clare County
- Newaygo State Park – Newaygo County
- Charles Mears State Park – Oceana County
- Fred Meijer White Pine Trail State Park – Kent to Wexford counties
- Silver Lake State Park – Oceana County
- Duck Lake State Park – Muskegon County
- Muskegon State Park – Muskegon County
- P. J. Hoffmaster State Park – Muskegon County
- Hart-Montague Trail – Muskegon/Oceana Counties
- Sleepy Hollow State Park – Clinton County
- Fort Custer Recreation Area – Kalamazoo County
- Kal-Haven Trail – Kalamazoo/VanBuren Counties
- Van Buren State Park – Van Buren County
- Warren Dunes State Park – Berrien County
- Grand Mere State Park – Berrien County
- Warren Woods Natural Area – Berrien County
- Yankee Springs Recreation Area – Barry County.

Access Sites in Montcalm County

Montcalm County has 25 public Boat Launch sites maintained by the Michigan Department of Natural Resources. The list of sites follows.

- Montcalm Lake
- Crystal Lake
- Horseshoe Lake
- Nevins Lake
- Dickerson Lake
- Flat River
- Hunter Lake
- Colby Lake
- Duck Lake
- Clifford Lake
- Derby Lake
- Swan Lake
- Little Whitefish Lake
- Muskellunge Lake
- Clear Lake
- West Lake
- Twin Stone Lakes East
- Half Moon Lake
- Tamarack Lake
- Rainbow Lake
- Cowden Lake
- Loon Lake
- Grass Lake North
- Grass Lake South
- Triangle Lake

Several of the County's townships, villages, and cities also maintain public boat launch sites.

Ski Areas in Region 8

- Bittersweet, Allegan County
- Pando, Kent County
- Cannonsburg, Kent County

Description of Planning and Public Input Process

The following identifies the steps used to develop Montcalm County's Recreation Plan.

Community Description

This step includes two categories. The first describes the County's physical features. These features include location, climate, soils, natural features, wildlife, and a description of the area's transportation network. The second category describes the County's social features. This section describes the existing population and provides information about local communities and Michigan for comparison. The plan includes population features including age and sex distribution; racial distribution; people with physical disabilities; types of households; employment; and income information. Much of this information is included in Appendix A to allow people to see the information and to meet the new guidelines for Recreation Plans.

Recreation Inventory

The West Michigan Regional Planning Commission (WMRPC) developed a description of the facilities through on-site visits to the County's parks and other recreation facilities. Information includes acreage, buildings, types of recreation activities, types of equipment, an evaluation of the strengths and weaknesses, surrounding land uses and other descriptions of the physical attributes of the area's recreation facilities. The inventory also includes a description of community parks and Michigan State Parks within Region 8 compiled using other WMRPC sources.

Goals and Actions

This step helped establish the County's recreation goals and actions. We identified and ranked issues by discussing issues with the Parks and Recreation Commission and by inviting the general public to a workshop held on August 14, 2007. The participants helped create a series of general actions to address each of the goals. An advertisement in the local paper was used to inform residents of the workshop.

Action Program

This step identifies what actions Montcalm County will perform over the five-year planning period. The Plan identifies actions in an easy to understand format. The Action Program also identifies where and when an action will occur; who will accomplish the action; how much the action will cost; and potential funding sources. The Action Plan also includes a Basis for Action Program that identifies why each of the actions is a priority.

Administrative Structure

This step describes how the County administers recreation facilities.

Plan Adoption

This section of the Recreation Plan documents that Montcalm County submitted copies of the Plan to the required organizations, allowed for public review of the Plan, held a public hearing, and adopted the Plan. Copies of the following documents are included in Appendix B:

- Letter to the West Michigan Regional Planning Commission
- Notices and other information related to Public Hearing and Public Workshop
- Minutes of meetings from Montcalm County Parks and Recreation Commission and County Board of Commissioners
- Board of Commissioners Resolution adopting Plan

Public Input Process

Goal Prioritization Workshop

The workshop held August 14, 2007 helped the Montcalm County Parks and Recreation Commission prioritize goals and actions for the five year planning period. Some of the actions have been grouped together since it would be more efficient to combine related tasks – such as improvements to a particular park. The following is the prioritized list of actions as ranked by the workshop participants.

Goal 1: Continue to improve facilities at Camp Ford Lincoln and provide a diverse range of facilities and activities to address the varied needs of camp users.

Action 1-1: Construct two additional sleeping facilities and demolish old bunkhouses.

Justification: The existing facilities are old and in need of updating. While they provide a “camp-like” atmosphere, their age and condition will eventually not be acceptable to groups wishing to provide such an experience. The one new sleeping facility, added in 2006, is a great asset to the park and provides year-round facilities for campers. Three cabins (with 12 people per cabin) is the current capacity of the camp’s septic system.

Action 1-2: Improve playground equipment

Justification: Providing safe and fun playground equipment will improve the usefulness of the park and attract a wider range of people such as young families and grandparents with children and grandchildren.

Action 1-3: Construct Barrier-free fishing pier/platform

Justification: Developing a barrier-free fishing site will provide many residents and visitors with a safe and enjoyable opportunity to fish that they might not have without such a facility. Such a facility benefits not only those with physical disabilities, but provides improved safety to everyone.

Goal #2: Develop the Flat River Nature Park

Action 2-1: Develop site plan

Justification: A site design plan is needed to determine the location of future facilities, the cost of facilities, and to create a clear vision of the location that will serve as motivation for the residents of Montcalm County. Site plan should include such features

as parking, trails, a rustic campground, a canoe launch, and other facilities such as restrooms and picnic areas.

Action 2-2: Follow-through on site plan recommendations for developing Flat River Nature Park

Justification: Developing a new park in Montcalm County will emphasize the County's natural features, including the Flat River. The County's rivers, streams, lakes, wooded areas, and other natural features are a major strength of the County that should be emphasized for residents and visitors.

Goal #3: Provide a safe and enjoyable experience at each of Montcalm County's parks.

Action 3-1: Work with County Sheriff, local units of government, neighborhood associations, and residents to develop a security plan for Montcalm County's parks. Develop a list of physical and operational improvements to ensure a safe experience for park users and to reduce vandalism, excessive noise, and other nuisances.

Justification: Maintaining a park system where park users are safe, where nearby property owners are not disturbed, and where park facilities are not vandalized is essential.

Goal #4: Increase awareness of recreation opportunities within Montcalm County

Action 4-1: Develop a marketing plan to inform residents and visitors of the facilities available in Montcalm County

Justification: Many of Montcalm County's parks are relatively unknown to many residents and most visitors to the County. Improving the visibility of the parks, through marketing, will increase the number of park users – generating more fees for pavilion rentals or the rental of Camp Ford Lincoln, creating a less isolated feeling in all of the parks (and decreasing safety and vandalism concerns), and providing residents with the benefits of a park system designed to fulfill their needs.

Action 4-2: Improve coordination with Montcalm County's local units of government, surrounding counties, the Michigan Department of Natural Resources, and other recreation providers.

Justification: Coordinating the provision of recreation facilities and marketing the area to residents and visitors can be performed more efficiently and effectively if there is more awareness and coordination between the various levels of recreation providers.

Montcalm County Recreation Plan – 2008-2012

Goal #5: Provide more features to increase the usefulness of McCarthy Park

Action 5-1: Expand parking facilities McCarthy Park

Justification: McCarthy Park is a large park that has facilities to serve hundreds of people. Providing adequate parking is essential for safety and to discourage parking in natural areas or along the M-91.

Action 5-2: Install a well and associated facilities (pump, pump house, shelter, and sidewalks)

Justification: The County's parks are oriented towards day-long events such as picnics that need water to provide park users with an enjoyable experience. Safe and plentiful water sources will expand park opportunities by improving the ability of park users to stay longer and encourage repeat visits. Such facilities will also allow the County to expand opportunities at each park to include more facilities as demand grows – but water is often a key ingredient to providing a successful and enjoyable facility. While this action covers three parks, the County considers it one action and will strive to achieve an “economy of scale” by designing identical facilities for each park, and seeking funding as a single project.

Action 5-3: Develop network of trails with support facilities (parking, benches, signage)

Justification: The 2001 County Recreation survey identified trails as a popular response for types of improvements people would like to see developed. The Montcalm County Parks and Recreation Commission also identified the improvement as an issue based on past discussions and goals. Such a system would provide residents with additional opportunities at an existing site and would make better use of the park, and provide a new resource that would attract a different group of park users.

Goal #6: Emphasize the Flat River as a recreation resource

Action 6-1: Perform a plan that will link the Flat River Nature Park, McCarthy Park, and other points of interest on the Flat River for canoeists, or tubers.

Action 6-2: Implement plan that will link the Flat River Nature Park, McCarthy Park, and other points of interest on the Flat River for canoeists, or tubers.

Justification: The Flat River is an ideal river for canoes or a leisurely float down the river in an inner-tube. Encouraging such activities promotes tourism and promotes the area's natural beauty.

Montcalm County Recreation Plan – 2008-2012

Goal #7: Provide a more diverse range of facilities and activities at Krampe Park

Action 7-1: Construct Barrier-free fishing pier/platform

Justification: Developing a barrier-free fishing site will provide many residents and visitors with a safe and enjoyable opportunity to fish that they might not have without such a facility. Such a facility benefits not only those with physical disabilities, but provides improved safety to everyone.

Action 7-2: Install well and associated facilities (pump, pump house, shelter, and sidewalks)

Justification: The County's parks are oriented towards day-long events such as picnics that need water to provide park users with an enjoyable experience. Safe and plentiful water sources will expand park opportunities by improving the ability of park users to stay longer and encourage repeat visits. Such facilities will also allow the County to expand opportunities at each park to include more facilities as demand grows – but water is often a key ingredient to providing a successful and enjoyable facility. While this action covers three parks, the County considers it one action and will strive to achieve an "economy of scale" by designing identical facilities for each park, and seeking funding as a single project.

Action 7-3: Improve accessibility to restrooms

Justification: Improving accessibility to restrooms provides a safer experience for all park users.

Action 7-4: Address erosion issues Krampe Park

Justification: Addressing potential erosion issues at Krampe Park is essential to provide everyone with a safe park facility that is not detrimental to the water quality in Winfield Lake.

Goal #8: Provide a broad range of facilities at Artman Park

Action 8-1: Construct two pavilions

Justification: The park currently has no shelter from the elements and lacks adequate facilities to attract regular park users. Adding shelters would provide additional gathering spaces within the County and would make the park more attractive for group gatherings.

Action 8-2: Install well and associated facilities (pump, pump house, shelter, and sidewalks)

Justification: The County's parks are oriented towards day-long events such as picnics that need water to provide park users with an enjoyable experience. Safe and plentiful water sources will expand park opportunities by improving the ability of park users to stay longer and encourage repeat visits. Such facilities will also allow the County to expand opportunities at each park to include more facilities as demand grows – but water is often a key ingredient to providing a successful and enjoyable facility. While this action covers three parks, the County considers it one action and will strive to achieve an “economy of scale” by designing identical facilities for each park, and seeking funding as a single project.

Action 8-3: Develop network of trails with support facilities (benches, signage)

Justification: The 2001 County Recreation survey identified trails as a popular response for types of improvements people would like to see developed. The Montcalm County Parks and Recreation Commission also identified the improvement as an issue based on past discussions and goals. Such a system would provide residents with additional opportunities at an existing site and would make better use of the park, and provide a new resource that would attract a different group of park users.

Action 8-4: Improve playground equipment

Justification: Providing safe and fun playground equipment will improve the usefulness of the park and attract a wider range of people such as young families and grandparents with children and grandchildren.

Goal #9: Provide indoor rental facilities for residents' parties and events

Action 9-1: Investigate the demand for a public facility for use by the public for events such as weddings, reunions, anniversaries, etc.

Justification: An affordable gathering space for public and private organizations would provide many benefits and could help raise funds for further park improvements.

Goal # 10: Provide an appropriate range of facilities at Schmeid Park

Action 10-1: Construct pavilion

Justification: The park currently has no shelter from the elements and lacks adequate facilities to attract regular park users. Adding a shelter would provide additional gathering spaces within the County and would make the park more attractive for group gatherings.

Goal #11: Ensure Montcalm County Parks are adequately funded to support the long-range improvement and operation of the facilities

Action 11-1: Stabilize funding for Montcalm County's parks.

Justification: Establishing a stable source of funding for the County's parks will allow for the continued maintenance of the parks and will allow the County to plan long-range improvements to the system.

Action 11-2: Continue to seek grants and private funds to maintain and improve Montcalm County's parks.

Justification: Seeking alternate sources of funding for the County's parks will allow for the continued maintenance of the parks and will allow the County to plan long-range improvements to the system.

Action 11-3: Improve coordination between Montcalm County and communities, school districts, and other recreation providers.

Justification: Improving coordination between all recreation providers in Montcalm County will provide a more complete network of resources and better serve the needs of the County's residents in an efficient manner.

Workshop Participants:

- Donald Cooper
- Albert Hackbart
- Bruce Noll
- Carl Paepke
- Sally Thomsen
- Marcia Walker
- Franz Mogdis
- Jim Osborne
- Donna Paepke
- Diane Hamlin
- Dave Bee (Facilitator)

Public Hearing

A draft of the Recreation Plan was prepared and presented to the public for review for at least 30 days. Copies of the Draft Plan were available at the Montcalm County Courthouse. A public notice was posted and placed in the local papers to notify residents of the opportunity to respond to the County's recreation plan. Written or verbal comments were accepted. Support information is included in Appendix B.

Action Program

All of the other sections of this plan lead to performing actions to address the recreation-related needs of Montcalm County residents and visitors. The following actions identify the year, the location, the approximate cost, and justifications for improvements. The Action Program is meant to be a guide. Some actions may be performed prior to, or after, the scheduled time due to funding opportunities, or difficulties in obtaining funds, land, or other resources. Additional actions, related to administration and support of the parks, can be found under each of the Goals identified in the previous section.

The order of the actions does not necessarily indicate the priority of issues in Montcalm County, but reflects a plan to accomplish actions over a five-year period. When seeking grants, such as a grant from the Michigan Natural Resources Trust Fund, it is likely that several actions would be grouped together to create a complete project and to reflect the financial realities of maintaining a park system.

2008	Action 1
	Action: Construct Barrier-free fishing pier/platform
	Location: Krampe Park
	Cost: \$35,000.00
	Funding Sources: Michigan Natural Resources Trust Fund, Land and Water Conservation Fund, Montcalm County, Service Clubs, Private Donations
	Justification: Developing a barrier-free fishing site will provide many residents and visitors with a safe and enjoyable opportunity to fish that they might not have without such a facility. Such a facility benefits not only those with physical disabilities, but provides improved safety to everyone.

2008	Action 2
	Action: Construct two additional sleeping facilities and demolish old bunkhouses.
	Location: Camp Ford Lincoln Park
	Cost: \$50,000.00
	Funding Sources: Michigan Natural Resources Trust Fund, Montcalm County, Service Clubs, and Private Donations
	Justification: The existing facilities are old and in need of updating. While they provide a “camp-like” atmosphere, their age and condition will eventually not be acceptable to groups wishing to provide such an experience. The one new sleeping facility, added in 2006, is a great asset to the park and provides year-round facilities for campers. Three cabins (with 12 people per cabin) is the current capacity of the camp’s septic system.

Montcalm County Recreation Plan – 2008-2012

2008	Action 3
	Action: Improve playground equipment
	Location: Camp Ford Lincoln
	Cost: \$20,000
	Funding Sources: Michigan Natural Resources Trust Fund, Land and Water Conservation Fund, Montcalm County, Local Service Clubs
	Justification: Providing safe and fun playground equipment will improve the usefulness of the park and attract a wider range of people such as young families and grandparents with children and grandchildren.

2008	Action 4
	Action: Construct Barrier-free fishing pier/platform
	Location: Camp Ford Lincoln
	Cost: \$35,000.00
	Funding Sources: Michigan Natural Resources Trust Fund, Land and Water Conservation Fund, Montcalm County, Service Clubs, Private Donations
	Justification: Developing a barrier-free fishing site will provide many residents and visitors with a safe and enjoyable opportunity to fish that they might not have without such a facility. Such a facility benefits not only those with physical disabilities, but provides improved safety to everyone.

2008	Action 5
	Action: Develop site plan
	Location: Flat River Nature Park
	Cost: \$5,000.00
	Funding Sources: Montcalm County
	Justification: A site design plan is needed to determine the location of future facilities, the cost of facilities, and to create a clear vision of the location that will serve as motivation for the residents of Montcalm County. Site plan should include such features as parking, trails, a rustic campground, a canoe launch, and other facilities such as restrooms and picnic areas.

Montcalm County Recreation Plan – 2008-2012

2008	Action 6 Action: Work with County Sheriff, local units of government, neighborhood associations, and residents to develop a security plan for Montcalm County's parks. Develop a list of physical and operational improvements to ensure a safe experience for park users and to reduce vandalism, excessive noise, and other nuisances. Location: Montcalm County Parks Cost: To be determined Funding Sources: Montcalm County Justification: Maintaining a park system where park users are safe, where nearby property owners are not disturbed, and where park facilities are not vandalized is essential.
-------------	---

2008	Action 7 Action: Develop a marketing plan for Montcalm County's parks that targets both residents and visitors to Montcalm County. Location: Montcalm County Parks Cost: To be determined Funding Sources: Montcalm County Justification: Many of Montcalm County's parks are relatively unknown to many residents and most visitors to the County. Improving the visibility of the parks, through marketing, will increase the number of park users – generating more fees for pavilion rentals or the rental of Camp Ford Lincoln, creating a less isolated feeling in all of the parks (and decreasing safety and vandalism concerns), and providing residents with the benefits of a park system designed to fulfill their needs.
-------------	---

2008	Action 8 Action: Develop long-range funding plan for Montcalm County Parks. Location: Administrative Cost: To be determined Funding Sources: Montcalm County Justification: Establishing a stable source of funding for the County's parks will allow for the continued maintenance of the parks and will allow the County to plan long-range improvements to the system.
-------------	---

Montcalm County Recreation Plan – 2008-2012

2009	Action 1 Action: Begin implementation of site plan developed for Flat River Nature Park Location: Flat River Nature Park Cost: To be determined Funding Sources: Michigan Natural Resources Trust Fund, Land and Water Conservation Fund, Montcalm County, Service Clubs, Private Donations Justification: The recent acquisition of the Flat River Nature Park will benefit residents and visitors by showcasing the Flat River and the unique 68 acre site. Montcalm County needs to emphasize its strengths in order to prosper in the future – and its strengths include its many natural features.
-------------	---

2009	Action 2 Action: Investigate the demand for a public facility for use by the public for events such as weddings, reunions, anniversaries, etc. Location: To be determined Cost: To be determined Funding Sources: Montcalm County, Local Service Clubs Justification: An affordable gathering space for public and private organizations would provide many benefits and could help raise funds for further park improvements.
-------------	--

2009	Action 3 Action: Perform a plan that will link the Flat River Nature Park, McCarthy Park, and other points of interest on the Flat River for canoeists, or tubers. Location: Flat River Cost: To be determined Funding Sources: Montcalm County Justification: The Flat River is an ideal river for canoes or a leisurely float down the river in an inner-tube. Encouraging such activities promotes tourism and promotes the area's natural beauty.
-------------	---

Montcalm County Recreation Plan – 2008-2012

2010	Action 1
	<p>Action: Expand parking facilities at McCarthy Park</p> <p>Location: McCarthy Park</p> <p>Cost: To be determined</p> <p>Funding Sources: Michigan Natural Resources Trust Fund, Land and Water Conservation Fund, Montcalm County, Service Clubs, Private Donations</p> <p>Justification: McCarthy Park is a large park that has facilities to serve hundreds of people. Providing adequate parking is essential for safety and to discourage parking in natural areas or along the M-91.</p>

2010	Action 2
	<p>Action: Install well and associated facilities (pump, pump house, shelter, and sidewalks)</p> <p>Location: “Bill” McCarthy Park</p> <p>Cost: \$15,000</p> <p>Funding Sources: Michigan Natural Resources Trust Fund, Land and Water Conservation Fund, Montcalm County, Local Service Clubs</p> <p>Justification: The County’s parks are oriented towards day-long events such as picnics that need water to provide park users with an enjoyable experience. Safe and plentiful water sources will expand park opportunities by improving the ability of park users to stay longer and encourage repeat visits. Such facilities will also allow the County to expand opportunities at each park to include more facilities as demand grows – but water is often a key ingredient to providing a successful and enjoyable facility. While this action covers three parks, the County considers it one action and will strive to achieve an “economy of scale” by designing identical facilities for each park, and seeking funding as a single project.</p>

2010	Action 3
	<p>Action: Develop network of trails with support facilities (parking, benches, signage)</p> <p>Location: “Bill” McCarthy Park</p> <p>Cost: \$30,000</p> <p>Funding Sources: Michigan Natural Resources Trust Fund, Land and Water Conservation Fund, Montcalm County, Service Clubs, Schools, Volunteer efforts</p> <p>Justification: The 2001 County Recreation survey identified trails as a popular response for types of improvements people would like to see developed. The Montcalm County Parks and Recreation Commission also identified the improvement as an issue based on past discussions and goals. Such a system would provide residents with additional opportunities at an existing site and would make better use of the park, and provide a new resource that would attract a different group of park users.</p>

Montcalm County Recreation Plan – 2008-2012

2011	Action 1
	<p>Action: Improve accessibility to restrooms</p> <p>Location: Krampe Park</p> <p>Cost: To be determined</p> <p>Funding Sources: Michigan Natural Resources Trust Fund, Land and Water Conservation Fund, Montcalm County, Service Clubs, Private Donations</p> <p>Justification: Improving accessibility to restrooms provides a safer experience for all park users.</p>

2011	Action 2
	<p>Action: Address erosion issues Krampe Park</p> <p>Location: Krampe Park</p> <p>Cost: To be determined</p> <p>Funding Sources: Michigan Natural Resources Trust Fund, Land and Water Conservation Fund, Montcalm County, Service Clubs, Private Donations</p> <p>Justification: Addressing potential erosion issues at Krampe Park is essential to provide everyone with a safe park facility that is not detrimental to the water quality in Winfield Lake.</p>

2011	Action 3
	<p>Action: Install well and associated facilities (pump, pump house, shelter, and sidewalks)</p> <p>Location: Krampe Park</p> <p>Cost: \$15,000</p> <p>Funding Sources: Michigan Natural Resources Trust Fund, Land and Water Conservation Fund, Montcalm County, Local Service Clubs</p> <p>Justification: The County’s parks are oriented towards day-long events such as picnics that need water to provide park users with an enjoyable experience. Safe and plentiful water sources will expand park opportunities by improving the ability of park users to stay longer and encourage repeat visits. Such facilities will also allow the County to expand opportunities at each park to include more facilities as demand grows – but water is often a key ingredient to providing a successful and enjoyable facility. While this action covers three parks, the County considers it one action and will strive to achieve an “economy of scale” by designing identical facilities for each park, and seeking funding as a single project.</p>

Montcalm County Recreation Plan – 2008-2012

2012	<p>Action 1</p> <p>Action: Construct two pavilions</p> <p>Location: Artman Park</p> <p>Cost: \$80,000</p> <p>Funding Sources: Michigan Natural Resources Trust Fund, Land and Water Conservation Fund, Montcalm County, Local Service Clubs</p> <p>Justification: The park currently has no shelter from the elements and lacks adequate facilities to attract regular park users. Adding shelters would provide additional gathering spaces within the County and would make the park more attractive for group gatherings.</p>
-------------	---

2012	<p>Action 2</p> <p>Action: Improve playground equipment</p> <p>Location: Artman Park</p> <p>Cost: \$20,000</p> <p>Funding Sources: Michigan Natural Resources Trust Fund, Land and Water Conservation Fund, Montcalm County, Local Service Clubs</p> <p>Justification: Providing safe and fun playground equipment will improve the usefulness of the park and attract a wider range of people such as young families and grandparents with children and grandchildren.</p>
-------------	--

2012	<p>Action 3</p> <p>Action: Install well and associated facilities (pump, pump house, shelter, and sidewalks)</p> <p>Location: Artman Park</p> <p>Cost: \$15,000</p> <p>Funding Sources: Michigan Natural Resources Trust Fund, Land and Water Conservation Fund, Montcalm County, Local Service Clubs</p> <p>Justification: The County’s parks are oriented towards day-long events such as picnics that need water to provide park users with an enjoyable experience. Safe and plentiful water sources will expand park opportunities by improving the ability of park users to stay longer and encourage repeat visits. Such facilities will also allow the County to expand opportunities at each park to include more facilities as demand grows – but water is often a key ingredient to providing a successful and enjoyable facility. While this action covers three parks, the County considers it one action and will strive to achieve an “economy of scale” by designing identical facilities for each park, and seeking funding as a single project.</p>
-------------	--

Montcalm County Recreation Plan – 2008-2012

2012	Action 4
	<p>Action: Develop network of trails with support facilities (benches, signage)</p> <p>Location: Artman Park</p> <p>Cost: \$30,000</p> <p>Funding Sources: Michigan Natural Resources Trust Fund, Land and Water Conservation Fund, Montcalm County, Service Clubs, Schools, Volunteer efforts</p> <p>Justification: The 2001 County Recreation survey identified trails as a popular response for types of improvements people would like to see developed. The Montcalm County Parks and Recreation Commission also identified the improvement as an issue based on past discussions and goals. Such a system would provide residents with additional opportunities at an existing site and would make better use of the park, and provide a new resource that would attract a different group of park users.</p>

2012	Action 5
	<p>Action: Construct pavilion</p> <p>Location: Schmeid Park</p> <p>Cost: \$40,000</p> <p>Funding Sources: Michigan Natural Resources Trust Fund, Land and Water Conservation Fund, Montcalm County, Local Service Clubs</p> <p>Justification: The park currently has no shelter from the elements and lacks adequate facilities to attract regular park users. Adding a shelter would provide additional gathering spaces within the County and would make the park more attractive for group gatherings.</p>

2012	Action 6
	<p>Action: Update County Parks and Recreation Plan</p> <p>Location: Montcalm County</p> <p>Cost: \$5,000.00</p> <p>Funding Sources: Montcalm County</p> <p>Justification: An up-to-date recreation plan provides a guide for the County to follow related to providing the County's residents with a network of quality park facilities.</p>

Conclusions

Montcalm County continues to support a system of County Parks for its residents and visitors. This plan represents the work of the Montcalm County Parks and Recreation Commission and their desire to best represent the recreation-related needs of the County's residents.

Currently, Montcalm County focuses its recreation-related efforts on providing primarily passive recreation opportunities for its residents and visitors. Picnic facilities and waterfront (lakes and rivers) activities dominate the focus. This focus seems to work in Montcalm County (and many other counties) since the County's communities and school districts focus more on providing facilities for active recreation.

APPENDIX A

Physical Features

The following information describes many of the area's natural and built environments. The purpose is to provide users of this Plan with an overview of the natural features since recreation activities are closely related to the physical features of Montcalm County.

Planning Area

This Plan serves the County of Montcalm. In some instances, information is provided for the individual communities within the County, the entire County, and Michigan to provide a better understanding of the area.

Location

Montcalm County is located in south central Michigan and is bordered by Mecosta and Isabella counties to the north, Gratiot County to the east, Ionia and Kent counties to the south, and Kent and Newaygo counties to the west.

Climate

Montcalm County's weather, like all of Michigan's, influences the recreational opportunities available throughout the year. The area can support a variety of activities throughout the year from swimming to skiing. Table A-1 identifies information related to the area's climate. Generally, January is the coldest month (23.5 average daily temperature) and has the highest snowfall (10.9 inches). July is generally the warmest month in the County (72.2 average daily temperature). June usually has the highest average precipitation (3.39 inches) and February generally has the lowest (1.47 inches). Prevailing winds are from the west.

Land Use

Montcalm County is a large county with 20 townships, three cities, and six villages. Much of the county is used for agriculture with wooded areas. The urban, residential, commercial, and industrial land uses are concentrated within the cities and villages. There are currently five recreation sites maintained by the County.

Table A-1 – Climate in Montcalm County

	Temperature (F)			Precipitation (inches)	
	Absolute Maximum	Absolute Minimum	Average Daily	Average	Average Snowfall
January	64	-21	23.5	1.55	10.9
February	67	-25	23.7	1.47	9.0
March	80	-12	32.8	2.05	7.9
April	88	7	45.8	2.51	1.5
May	92	23	57.1	3.38	0.3
June	101	35	67.2	3.39	0.0
July	108	42	72.2	2.50	0.0
August	104	39	69.7	2.90	0.0
September	96	27	62.0	3.29	Trace
October	87	12	51.5	2.48	0.2
November	80	-3	38.1	2.30	4.0
December	62	-16	27.5	1.86	9.6
Year	108	-25	47.6	29.68	43.4

Source: U.S. Department of Agriculture

Soils

The Soil Survey of Montcalm County, Michigan identifies the soils across the County. Map A-1 identifies the locations of the soil associations, which are described below:¹

Grayling: Light-colored, level to strongly sloping sands

Mancelona-Gladwin-Epoufette: Light colored to dark, level to gently sloping loamy sands and Bog soils

McBride-Isabella-Newaygo: Light colored, nearly level to moderately sloping sandy loams

Melita-Iosco-Kawkawlin: Light colored, nearly level to gently sloping loams and loamy sands

Montcalm-Mancelona: Light colored, moderately sloping to strongly sloping loamy sands and sandy loams

Montcalm-McBride: Light colored, nearly level to moderately sloping loamy sands and sandy loams

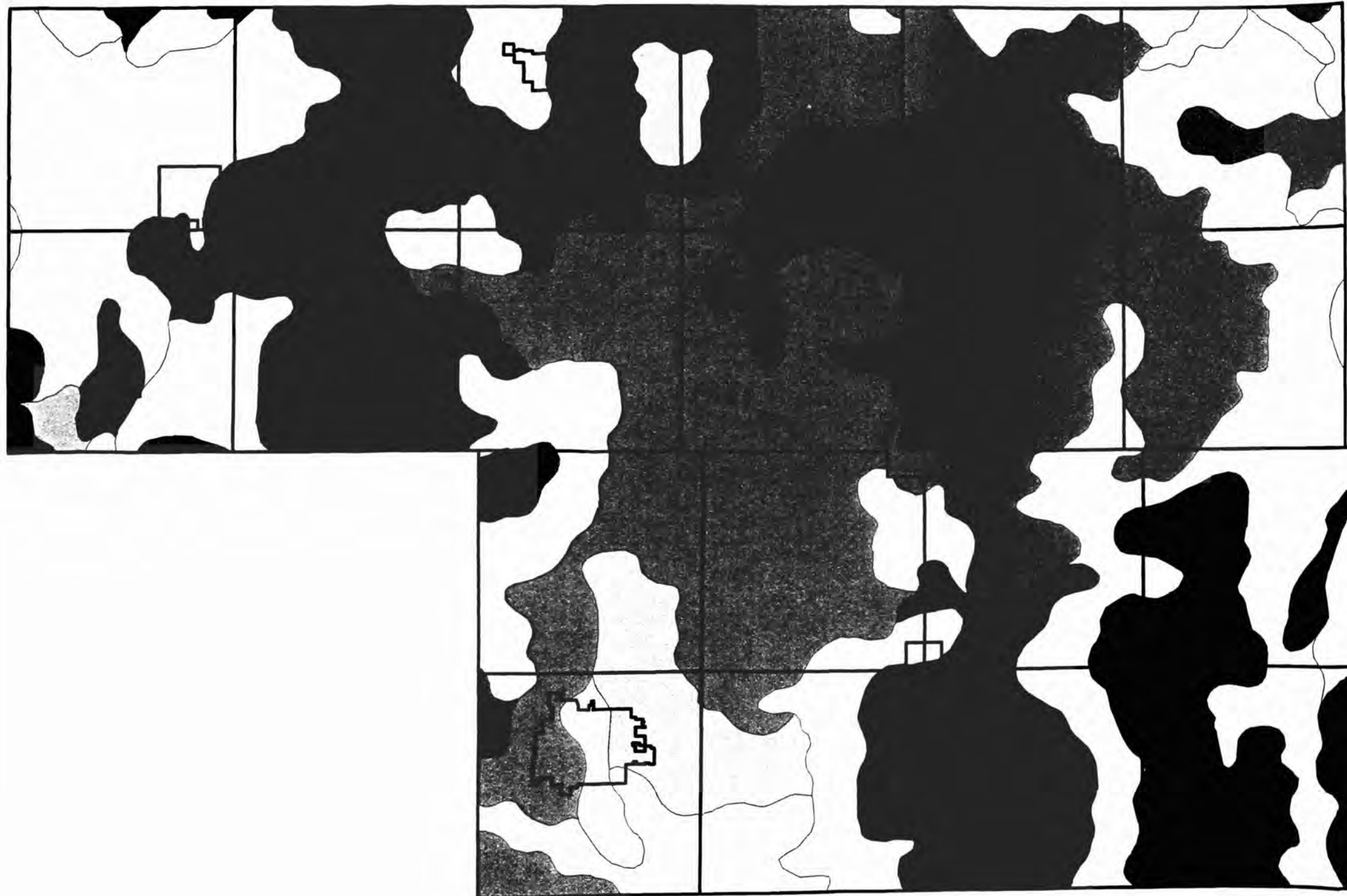
Nester-Kawkawlin: Light colored, nearly level to strongly sloping loams

Rifle-Epoufette-Roscommon: Very dark, nearly level Bog soils, sands, and loamy sands

¹ Soil Associations are very general collections of several different and unique soils and are provided in order to simplify the soil classifications. Since soil classification is site specific and varies with area, landscape, and the natural environment, these associations may not provide sufficient information on a particular soil. The Soil Survey Manual of Montcalm County can be referred to for further details.

Map A-1

Montcalm County Recreation Plan Soils Map



LEGEND
Soil Associations

- Grayling
- Mancelona-Gladwin-Epoufette
- McBride-Isabella-Newaygo
- Melita-Iosco-Kawkawlin
- Montcalm-Mancelona
- Montcalm-McBride
- Nester-Kawkawlin
- Rifle-Epoufette-Roscommon

City and Township Boundaries
□

Topography

Montcalm County's topography is primarily a flat to gently sloping landscape. There are areas of moderate (10 to 25 percent) and extreme (greater than 25 percent) slopes, but these are isolated within the Flat River valley.

Water Features

Montcalm County has many water resources suitable for recreation. The Flat River provides many fishing and boating opportunities and passes through the middle of the County from north to south. The Little Muskegon River passes through the northwest corner of the County. Major lakes include Whitefish Lake, Bass Lake, Little Whitefish Lake, Wood Lake, Sand Lake, Winfield Lake, Coady Lake, Cranberry Lake, Cowden Lake, Muskellunge Lake, Tamarack Lake, Dutchman Lakes, Spring Lake, Turk Lake, Burgess Lake, Baldwin Lake, Sanderson Lake, Fish Lake, Clifford Lake, Dickerson Lake, Derby Lake, Lake Montcalm, Mud Lake, Horseshoe Lake, Townline Lake, Half Moon Lake, Crooked Lake, Pearl Lake, Holland Lake, Crystal Lake, Duck Lake, and others.

Wildlife

The County's wildlife is typical of that found in most of lower Michigan. Common wildlife includes deer, raccoons, opossums, rabbits, muskrats, beavers, squirrels, rodents and other small mammals. There are also frequent sightings of bear, fox, and coyote. The area is home to a variety of birds including owls, wild turkeys, pheasants and many others. The area is also a seasonal home to many migratory birds including ducks and Canada Geese.

Vegetation

Originally, much of Michigan was covered with a dense forest of deciduous trees. As the area was cleared for farming and development, or the trees were removed for timber, the area's forests were replaced by farm fields, open field areas, orchards and smaller forested areas containing both deciduous and coniferous trees.

Transportation

Montcalm County is well-served by transportation routes. Major north-south routes include US-131 on the County's west side, and M-91 through the middle, and M-66 towards the east side. East-west routes include M-57 through the southern portion, and M-46 through the northern.

Social Features

This section of the Plan describes the population of Montcalm County and Michigan. The description focuses on the County and its unique population characteristics. In addition to the overall population figures, this section also describes the population's age, gender, race, and ancestry. Household distribution is also detailed as is the number of people with physical disabilities. Employment trends are discussed as well as employment distribution, incomes, and poverty status. Many of these features can influence the type of recreation desired or needed by the County's residents.

Population Trends and Projections

If a community uses only recreation standards to guide its recreation-related decisions, the total population numbers identified in Table A-2 are the only numbers needed. But, no community bases all of its decisions on only standards. The needs of the population need to be further explored by looking at who makes up the population and identifying their desires.

Table A-2 shows that Montcalm County's population increased from 47,555 in 1980 to 61,266 in 2000. This is a 28.8 percent increase in the County's population. During the same period Michigan's population increased by only 7.3 percent. Projections indicate the County will increase to 66,196 by 2005 and 71,719 by 2010.

Two of the County's cities experienced population decreases during the same period and one increased. Between 1980 and 2000 half of the six villages' populations increased and half decreased in population. While some of the cities and villages decreased in population, the number of households increased or remained constant – the decreases relate to smaller households in more recent years.

All of Montcalm County's twenty townships experienced population growth during the 20-year period. This is significant since many of the townships do not provide recreation resources for their residents who rely instead on County facilities. It also demonstrates that the County's population is dispersed over a large area which often creates issues related to where to provide facilities.

Table A-2 – Population Trends and Projections

AREA	TRENDS			PROJECTIONS	
	1980	1990	2000	2005	2010
Montcalm County	47,555	53,059	61,266	66,196	71,719
Cities					
Carson City	1,229	1,158	1,190	1,191	1,192
Greenville	8,019	8,101	7,935	7,926	7,917
Stanton	1,315	1,504	1,504	1,548	1,594
Villages					
Edmore	1,176	1,126	1,244	1,276	1,309
Howard City	1,118	1,351	1,585	1,711	1,843
Lakeview	1,139	1,108	1,112	1,110	1,108
McBride	252	236	232	228	223
Pierson	216	207	185	179	173
Sheridan	664	730	705	707	710
Townships					
Belvidere	1,955	2,134	2,438	2,623	2,819
Bloomer	1,226	2,922	3,039	3,512	4,093
Bushnell	1,264	1,285	2,109	2,477	2,902
Cato	1,302	1,392	1,808	1,991	2,188
Crystal	2,224	2,541	2,824	3,005	3,195
Day	982	960	1,050	1,080	1,111
Douglass	1,787	1,944	2,377	2,624	2,892
Eureka	2,303	2,594	3,271	3,596	3,943
Evergreen	1,710	2,020	2,392	2,605	2,831
Fairplain	1,380	1,571	1,826	1,970	2,122
Ferris	1,133	1,189	1,379	1,462	1,548
Home	1,438	1,387	1,464	1,487	1,510
Maple Valley	1,815	1,824	2,083	2,194	2,309
Montcalm	2,521	2,879	3,178	3,379	3,588
Pierson	1,485	1,970	2,681	3,118	3,616
Pine	1,224	1,392	1,654	1,794	1,942
Reynolds	1,244	1,677	2,694	3,347	4,156
Richland	2,421	2,355	2,868	3,077	3,298
Sidney	1,868	2,166	2,390	2,560	2,740
Winfield	1,145	1,336	2,049	2,420	2,849
Region 8	838,494	946,445	1,104,848	1,185,144	1,289,074
Michigan	9,262,044	9,295,277	9,938,444	na	na

Source: U.S. Census of Population; West Michigan Regional Planning Commission

Age Distribution

While the overall population is the most important consideration, there are other characteristics to consider when planning for a community's recreation. The age distribution of a County influences the types of facilities and programs needed. Table A-3 shows that the County's median age (35.6) is similar to Michigan's median age of 35.5. The distribution of age groups in the County is very similar to Michigan's. No group stands out more than other groups. The County should make efforts to provide facilities that meet the varied demands of all age groups.

Table A-3 – Age Distribution

	Montcalm County		Michigan
	#	%	%
Under 5	3,996	6.5	6.8
5-17	12,584	20.5	22.2
18-24	5,076	8.3	6.5
25-34	8,369	13.7	13.7
35-44	1,038	16.5	16.1
45-54	7,955	13.0	13.8
55-64	5,727	9.3	8.7
65-84	6,590	10.8	10.9
85+	781	1.3	1.4
Total	61,266	100.0	100.0
Median	35.6	---	35.5

Source: 2000 U.S. Census of Population

Male/Female Distribution

Most communities have a higher proportion of females since they have a longer life expectancy. In Michigan, females account for 51.0 percent of the population. Table A-4 shows that women account for 48.7 percent of Montcalm County's population due to the large male population housed in the State Prison in Carson City. This information has very little influence on the area's recreation since the ratio of males and females in Montcalm County that will use the facilities is actually very similar to Michigan's ratio.

Table A-4 – Male/Female Distribution

	Montcalm County		Michigan
	#	%	%
Male	31,452	51.3	49.0
Female	29,814	48.7	51.0
Total	61,266	100.0	100.0

Source: 2000 U.S. Census of Population

Racial Distribution

The racial distribution of Montcalm County is different than Michigan's distribution. Table A-5 shows the County's population distribution is 94.8 percent White, 2.2 percent Black, 0.6 percent Native American, 0.3 percent Asian or Pacific Islander, and 0.6 percent other. Additionally, 1.5 percent of the County's population reported two or more races. Michigan has a lower percentage of Whites, a higher percentage of Blacks, a higher percentage of Asian or Pacific Islanders, and a higher percentage of other races. The State also had a

higher percentage of people reporting two or more races. The County's racial distribution has no influence on the area's recreation.

Table A-5 – Racial Distribution

	Montcalm County		Michigan
	#	%	%
White	58,101	94.8	80.2
Black	1,330	2.2	14.2
American Indian, Eskimo or Aleut	366	0.6	0.6
Asian or Pacific Islander	187	0.3	1.8
Other Race	390	0.6	1.3
2 or More Races	892	1.5	1.9
Total	61,266	100.0	100.0

Source: 2000 U.S. Census of Population

Ancestry

The ancestry of the area's population is shown in five groups to decrease the number of categories presented. Ancestry is not expected to play any role in the area's recreation programming. Table A-6 identifies Western European, which includes Danish, Dutch, French, German, Italian, Norwegian, Portuguese, Swedish and Swiss; Eastern European, which includes Czech, Greek, Hungarian, Lithuanian, Polish, Russian, Slovak, and Ukrainian; British Isles, which includes English, Irish, Scotch-Irish, Scottish and Welsh; North American, which includes French Canadian and United States or American; and "other", which includes Arab, sub-Saharan African, West Indian and "other" ancestries (a Census category). Total ancestries reported usually exceed the actual population since many people declare more than one ancestry.

Montcalm County's distribution of ancestry is different than Michigan's since the proportion of people with Western European, British Isles, and North American backgrounds are higher in the County. The County has a significantly lower proportion of residents with Eastern European and Other ancestries than Michigan.

Table A-6 – Ancestry

	Montcalm County		Michigan
	#	%	%
Western European	26,571	43.4	34.7
Eastern European	3,163	5.2	11.4
British Isles	17,873	29.2	22.7
North American	6,346	10.4	6.5
Other	7,339	12.0	24.7
Total	61,292	100.0	100.0

Source: 2000 U.S. Census of Population

Household Distribution

Household distribution can influence a community's recreation needs since the distribution often identifies unique community traits. Montcalm County has several household characteristics that may influence the recreation programming. Table A-7 shows the County has a higher proportion of family households (73.3 percent) than Michigan (68.0 percent). Within the overall category of family households, Montcalm County has a higher percentage of married couple families than the state, a lower proportion of female householders with no spouse and lower percentage of male householders with no spouse in comparison to Michigan as a whole. Since the County has a higher proportion of family households, it follows that it has a lower proportion of non-family households. Montcalm County has a lower proportion of one-person households (21.9 percent), but a similar proportion of householders 65 and over living alone.

This information identifies the need to focus attention on family households – including married couple families and families with one parent. Also, non-family households make up a large percentage of the population and should be considered in any recreation programming.

Table A-7 – Household Distribution

	Total Households	Family Households				Nonfamily Households			Persons per Household	Persons in Group Quarters
		Total	Married Couple Family	Female Householder with no Spouse	Male Householder with no Spouse	Total	Householder Living Alone	Householder 65 & Over Living Alone		
Montcalm County	22,079	16,176	12,972	2,148	1,056	5,903	4,846	2,040	2.7	2,717
%	100.0	73.3	58.8	9.7	4.8	26.7	21.9	9.2	---	---
Michigan (%)	100.0	68.0	51.4	12.5	6.0	32.0	26.2	9.4	2.5	---

Source: 2000 U.S. Census of Population

Physical Disabilities

Table A-8 lists noninstitutionalized residents with disabilities. The table indicates the County has a higher proportion of residents in all age groups with physical disabilities than Michigan as a whole. When planning for recreation facilities and activities the County should insure accessibility for a wide range of facility and program users.

Table A-8 – Physical Disabilities

	Population 5-20 with a Disability	Population 21-64 with a Disability	Population 65+ with a Disability
Montcalm County	1,480	6,405	3,137
%	10.1	19.5	43.3
Michigan (%)	8.5	18.1	42.3

Source: 2000 U.S. Census of Population

Employment

Between 2002 and 2005 the County experienced a fairly stable labor force but it dipped in 2006. At the same time the County experienced a decreasing number of employed, resulting in an increased unemployment rate that decreased slightly in 2004 (Table A-9) before increasing in 2005 to 8.4 percent – and then making a dramatic increase in 2006 to 12.6 percent. The labor force was 28,810 people in 2006, with an annual average of 25,167 employed and 3,643 unemployed. The County's unemployment rate is consistently higher than rates in Region 8, Michigan, or the United States, and the highest of the seven counties in Region 8.

Table A-10 identifies employment distribution in the County and Michigan. In Montcalm County, the largest employment category is Manufacturing (29.7 percent) followed by Education, Health and Social Services (17.6 percent), and Retail (12.4 percent). Michigan's employment distribution differs in several ways including a lower percentage of Manufacturing, Retail, Agriculture, and Construction.

The employment information shows the area's employment diversity and emphasizes the variety that exists. Many workers have active jobs while others have sedentary jobs. Facilities and programs should exist that benefit both of these categories. The County should also consider people's alternate hours when setting hours for recreation programs.

Table A-9 – Employment Trends

	2002	2003	2004	2005	2006
Montcalm County					
Labor Force	29,343	29,434	29,832	29,588	28,810
Employment	27,156	27,095	27,485	27,089	25,167
Unemployment	2,187	2,339	2,347	2,499	3,643
Unemployment Rate	7.5	7.9	7.9	8.4	12.6
Region 8					
Unemployment Rate	6.0	6.9	6.6	5.8	6.1
Michigan					
Unemployment Rate	6.2	7.1	7.0	6.7	6.9
United States					
Unemployment Rate	5.8	6.0	5.5	5.1	4.6

Source: Michigan Department of Labor and Economic Growth, Labor Market Information

Table A-10 – Labor Force Employment

	Montcalm County		Michigan
	#	%	(%)
Employed Persons 16 and Over	26,560	100.0	100.0
Agriculture, Forestry, Fishing and Hunting, and Mining	869	3.3	1.1
Construction	1,998	7.5	6.0
Manufacturing	7,900	29.7	22.5
Wholesale Trade	673	2.5	3.3
Retail Trade	3,286	12.4	11.9
Transportation and Warehousing, and Utilities	892	3.4	4.1
Information	415	1.6	2.1
Finance, Insurance, Real Estate, and Rental Leasing	920	3.5	5.3
Professional, Scientific, Management, Administrative, and Waste Management Services	1,109	4.2	8.0
Educational, Health and Social Services	4,680	17.6	19.9
Arts, Entertainment, Recreation, Accommodation, and Food Services	1,563	5.9	7.6
Other Services	1,251	4.7	4.6
Public Administration	1,004	3.8	3.6

Source: 2000 U.S. Census of Population

Socio-Economic Levels

The County's household income levels are considerably lower than Michigan. Table A-11 shows the Montcalm County's 1999 median household income was \$37,218. This figure is lower than Michigan's median household income of \$44,667. The County also has a significantly lower per capita income than the State. The percentage of residents below the poverty level in the County (10.4 percent) is similar to Michigan's rate (10.3 percent).

This information indicates the need for affordable recreation opportunities in Montcalm County. The figures also help justify receiving funding assistance to improve recreation facilities within the County.

Table A-11 – Socio-Economic Levels

	Median Household Income	Per Capita Income	Percent of Population Below Poverty Level
Montcalm County	\$37,218	\$16,183	10.4%
Michigan	\$44,667	\$22,168	10.3%

Source: 2000 U.S. Census of Population

APPENDIX B

WMRPC



WEST MICHIGAN REGIONAL PLANNING COMMISSION

820 Monroe Avenue NW ♦ Suite 214 ♦ Grand Rapids, MI 49503 ♦ (616) 774-8400 ♦ www.wmrpc.org

February 13, 2008

Ms. Monica Day, Grants Coordinator
Grants Management
Michigan Department of Natural Resources
PO Box 30425
Lansing, Michigan 48909-7925

Subject: Montcalm County Parks and Recreation Plan

Dear Ms. Day,

One of the MDNR requirements for a recreation plan involves forwarding copies of the completed plan to the County and the Regional Planning Commission. Since the West Michigan Regional Planning Commission (WMRPC) was involved in helping Montcalm County develop its plan, no copies have been mailed (to either the County or the WMRPC), but I have included this letter to inform the MDNR that both Montcalm County, and the WMRPC are aware of the planning effort.

Please give me a call if you have any questions or concerns.

Sincerely,

A handwritten signature in cursive script that reads "Dave Bee".

Dave Bee, AICP
Director



OUR MISSION STATEMENT

To assist planning efforts in community and economic development, provide a regional forum for sharing information and ideas, and promote cooperative solutions to regional issues.

RECEIVED
OCT 22 2007

217562-900000
\$120.65



109 North Lafayette Street
P.O. Box 340
Greenville, MI 48838

Phone: 818-754-9301
Fax: 618-754-8559

Parent Company of: The Daily News, Carson City Gazette, Rockford Independent

Proof of Publication

STATE OF MICHIGAN)
County of Montcalm) SS.

Sue L. Carter, agent of Robert Stafford, Publisher of THE DAILY NEWS Greenville, a newspaper printed, published and circulated in the County of Montcalm, State of Michigan, being duly sworn, deposes and says that the annexed notice has been printed, published and circulated in said newspaper at least once each week for 1 successive week(s) and that the first publication thereof was on the 6th day of October A.D. 2007 and the last publication on the 6th day of October A.D. 2007.

Run Dates: 10/6/07

NOTICE OF PUBLIC HEARING

COUNTY OF MONTCALM
MONTCALM COUNTY RECREATION COMMISSION

NOTICE OF PUBLIC HEARING FOR
THE MONTCALM COUNTY RECREATION PLAN
211 West Main Street
Stanton, Michigan 48888

Notice is hereby given that a public hearing will be held November 13, 2007, at 10:00 a.m. by the Montcalm County Parks & Recreation Commission on the proposed 2009-2012 Montcalm County Recreation Plan.

The hearing will be held in the Third Floor Conference Room, County Administrative Building, 211 West Main Street, Stanton, Michigan.

Oral comments will be accepted at the hearing or written comments can be submitted to the Office of the County Controller prior to the meeting. Copies of the proposed plan are now available for review at the Office of the County Controller, 211 West Main Street, PO Box 368, Stanton, MI 48888. Phone inquiries can be made to (989) 831-7300 for additional information.

By: Chris Thyer
Controller/Administrator

Sue L. Carter

Agent signature

Subscribed and sworn before me this the 10 day of

October A.D. 2007

Janie C. Petersen

Janie C. Petersen
Notary Public - Montcalm County, Michigan
My Commission Expires 7/18/2013
Acting in the County of _____

PUBLISHER'S BILL

10.0 Column Inches at \$11.25 each for the first inser \$112.50

Affidavit and Clipping Fees: \$8.15

Total cost: \$120.65

PAID OCT 22 2007

Account number: P0182751
Ad Number: 83497

Mont Co Brd of Commissioners
PO Box 368
P.O. Box 368
Stanton MI 48888

Legal/Budget hearing
November 13 budget hearing for Parks and recreation

PUBLISHER'S BILL

10.0 Column Inches at \$11.25 each for the first insert \$112.50

Affidavit and Clipping Fees: \$8.15

Total cost: \$120.65

CORRECTED 1/17/08

**PARKS & RECREATION COMMISSION
M I N U T E S**

Tuesday, November 13, 2007, 10:00 a.m.
Third Floor Conference Room
County Administrative Building

Members Present: Carl Paepke
Marcia Walker
Franz Mogdis
Carl Mapes
Sally Thomsen
Bruce Noll
Steve Book
Don Cooper

Members Absent: Albert Hackbardt
Michael Balars
Don McCracken

Staff Present: Chris Hyzer

Others Present: Dave Bee
John Kroneck
Donna Paepke
Don Smucker

The meeting was called to order by Chairman Paepke at 10:00 a.m.

Roll call was taken and a quorum was present.

Motion by Mogdis, seconded by Thomsen to accept the minutes of September 19, 2007 as submitted.
Motion carried.

Motion by Thomsen, supported by Noll to accept the agenda as submitted. Motion carried.

Public Comments were offered. John Kroneck discussed information that was learned during the Substance Abuse Summit and different recreation opportunities should be explored for citizens of the county.

Presidents Report – Carl Paepke had nothing to report this month.

Motion by Thomsen supported by Mogdis to enter the public hearing at 10:05 a.m. for the purpose of the Proposed 2008-2012 Montcalm County Recreation Plan. Motion carried.

John Kroneck discussed the trail that goes through State land and would like to see that land changed to a recreation area with no hunting allowed there. He also inquired about the marketing of the parks in the

county. Franz Mogdis discussed the brochure and the magazine that the committee is working on.

Carl Paepke read the email from Marv Kladder about erosion at Schmied Park. Don Cooper discussed with the committee about the situation at the park. It was noticed during the park inspection also. The erosion is caused by the ice in the winter. Don Cooper discussed some solutions to fix the problem. Don Cooper thinks that an access point should be looked at instead of the whole shoreline.

Motion by Mogdis supported by Cooper to fix 10 -15 foot of the erosion on the shoreline at Schiemd Park. Motion carried.

Carl Paepke spoke about the letter received from Laura Readle from Edgerton Upper Elementary about opening up the Krampe Park earlier than May 1st. She would like to use the park on April 28-29, 2008.

Motion by Cooper supported by Thomsen to allow Krampe Park to be open on April 28-29, 2008 for use by the Edgerton Upper Elementary for the school field trip. Motion carried.

Chris Hyzer discussed with members about the website and some updates that need to be made. Chris Hyzer asked the members if they had any suggestions to get back with him.

Moved by Thomsen, supported by Cooper to close the Public Hearing at 10:46 a.m. Motion carried.

Franz Mogdis discussed that the Planning Commission should have a chance to comment on the proposed plan.

Motion by Noll, supported by Walker to receive comment from the Montcalm County Planning Commission on the proposed 2008-2012 Park and Recreation Plan. Motion carried.

Motion by Noll supported by Cooper to approve and adopt the Montcalm County Recreation Plan.

WHEREAS, the Montcalm County Recreation Commission has reviewed the 2008-2012 Montcalm County Recreation Plan, and

WHEREAS, after due notice, a meeting was held November 13, 2007 at the County Administration Building, a handicapped accessible building, for the purpose of hearing comments related to the County's Recreation Plan at said Public Hearing.

NOW THEREFORE BE IT RESOLVED, the Montcalm Recreation Commission approves the Montcalm County Recreation Plan.

Dave Bee discussed his experience about the plan and different municipalities and his concerns. He went over some of changes that will be made to the plan. The committee discussed the plan in general and made some changes to the plan.

Chris Hyzer went over the specifications from the last bunk house that was built. The committee discussed the specifications and will have the Controller and the Maintenance Director meet with the Building Official to review the plans.

The committee reviewed the updated park rules for Camp Ford Lincoln.

Motion by Noll supported by Cooper to approve the updated park rules for Camp Ford Lincoln. Motion carried.

The committee reviewed a comment form for the campers at Camp Ford Lincoln.

Motion by Noll, supported by Thomsen to adopt the comment form for Camp Ford Lincoln. Motion carried.

Don Cooper discussed the property donation by Mrs. Jamrog. She would like to have the county pay for the 2007 taxes.

Motion by Cooper, supported by Noll to pay the 2007 property taxes for the property that was donated by Mrs. Jamrog that is located in Honeymoon Heights Lot 3. Motion carried.

Don Cooper discussed the items still needed at the Nature Park. He will get a list around for the next meeting.

Don Cooper discussed getting an ex-officio from the Road Commission.

Motion by Cooper Supported by Noll that the Parks and Recreation Commission send a letter to the Road Commission for Montcalm County requesting that the appoint an ex-officio liaison to attend the Parks and Recreation Commission meetings in lieu of a Road Commissioner. Motion carried.

Public comments. None were given.

The meeting was adjourn at 11:52 a.m.

Respectfully submitted,

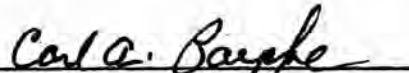
Carl Paepke, Chairman

**RESOLUTION ADOPTING THE
MONTCALM COUNTY RECREATION PLAN**

WHEREAS, the Montcalm County Recreation Commission has reviewed the 2008-2012 Montcalm County Recreation Plan, and

WHEREAS, after due notice, a meeting was held November 13, 2007 at the County Courthouse, a handicapped accessible building, for the purpose of hearing comments related to the County's Recreation Plan at said Public Hearing.

NOW THEREFORE BE IT RESOLVED, the Montcalm Recreation Commission approves the Montcalm County Recreation Plan.


Chair

MONTCALM COUNTY BOARD OF COMMISSIONERS

Regular Meeting

Monday, January 28, 2008

1:00 PM

The regular meeting was called to order by Chairman Carr at 1:00 p.m.

The meeting opened with the Pledge of Allegiance. Pastor Larry Pike from the Traditional Congregational Church in Stanton offered invocation.

Members present at roll call: Commissioners Walker, Petersen, Retzloff, Johansen, Paepke, Baker, Carr, Caris and McCrackin. Members absent at roll call: None.

Others present: Kristen Millard, Dave Bee, Roberta Murray, Ryan Jeltema and Chris Hyzer.

Moved by Commissioner McCrackin, supported by Commissioner Caris to approve the January 14, 2008, regular meeting minutes as written. Motion carried.

Moved by Commissioner Johansen, supported by Commissioner Paepke to approve the agenda as presented. Motion carried.

Public comments were offered and none were given.

Chris Hyzer provided the board with information regarding two committee vacancies and recommendations for appointments to fill those vacancies. Moved by Commissioner Retzloff, supported by Commissioner Paepke to appoint John Kroneck to the Riverheaven Regional Advisory Council with his term expiring December 31, 2008. Motion carried.

Moved by Commissioner Retzloff, supported by Commissioner Johansen to appoint Bob Clingenpeel to the Montcalm Substance Abuse Advisory Council, term expiring December 31, 2009. Motion carried.

Chris Hyzer provided the board with a draft of the Montcalm County Recreational Plan for 2008-2012. Dave Bee, West Michigan Regional Planning Commission, was in attendance and walked through the plan with the board. Moved by Commissioner Paepke, supported by Commissioner Walker to approve and adopt **RESOLUTION 2008-03 RESOLUTION ADOPTING THE MONTCALM COUNTY RECREATION PLAN:**

WHEREAS, the Montcalm County Board of Commissioners has reviewed the Recreation Plan; and

WHEREAS, after due notice, a meeting was held Monday, January 28, 2008 at the County Courthouse, a handicapped accessible building, for the purpose of hearing comments related to the County's Recreation Plan.

NOW THEREFORE BE IT RESOLVED, the Montcalm County Board of Commissioners approved the Montcalm County Recreation Plan.

Motion carried.

Chris Hyzer provided the board with an Emergency Management Resolution to provide for mitigation, preparedness, response and recovery from natural and man-made disasters within Montcalm County. Moved by Commissioner Retzloff, supported by Commissioner Paepke to approve and adopt **RESOLUTION 2008-04 EMERGENCY MANAGEMENT RESOLUTION.** Motion carried. (A copy of the Resolution is on file in the County Clerk's office.)

Moved by Commissioner Retzloff, supported by Commissioner Petersen to approve consent agenda items 4 through 8 and move stated action:

County Clerk	Resolution 2008-01, Amend Final 911 Service Plan	Place on file
County Clerk	Resolution 2008-02, Adopt Monthly 911 Surcharge	Place on file
County Clerk	PA 116 for Ed & Barbara Hagerman	Place on file
County Clerk	PA 116 for Ed & Barbara Hagerman	Place on file
County Controller	Amendment to MSC-20005-9765-HOA	Place on file

Motion carried.

Moved by Commissioner Paepke, supported by Commissioner Walker to grant permission to Alltel to allow for the property they lease from the county to be crossed for logging purposes as long as the land is returned to the County in its original condition. Motion carried.

Moved by Commissioner Paepke, supported by Commissioner Petersen to place the January 17, 2008 Parks & Recreation Commission minutes on file. Motion carried.

Moved by Commissioner McCrackin, supported by Commissioner Paepke to place the January 14, 2008 Health & Human Services Committee minutes on file. Motion carried.

Moved by Commissioner Caris, supported by Commissioner Baker to allow the Sheriff to hire a part time person to instruct Boating Safety classes in Montcalm County beginning March 2008 at a rate of \$18.00 per hour without benefits. Motion carried.

Moved by Commissioner Caris, supported by Commissioner Paepke to approve warrant number 012808 in the amount of \$415,657.31. Motion carried.

Moved by Commissioner Caris, supported by Commissioner Paepke to place the January 28, 2008 Finance and Personnel Committee minutes on file. Motion carried.

Public comments were offered. Commissioner Baker distributed a copy of an article regarding area health insurance that he would like the board members to review.

Moved by Commissioner Retzloff, supported by Commissioner Petersen to adjourn at 1:43 p.m. Motion carried.



Kristen Millard, County Clerk

Patrick Q. Carr, Chairman

RESOLUTION 2008-03
RESOLUTION ADOPTING THE MONTCALM COUNTY
RECREATION PLAN

WHEREAS, the Montcalm County Board of Commissioners has reviewed the Recreation Plan; and

WHEREAS, after due notice, a meeting was held Monday, January 28, 2008 at the County Courthouse, a handicapped accessible building, for the purpose of hearing comments related to the County's Recreation Plan.

NOW THEREFORE BE IT RESOLVED, the Montcalm County Board of Commissioners approved the Montcalm County Recreation Plan.

STATE OF MICHIGAN }
 }SS.
COUNTY OF MONTCALM }

I, the undersigned, duly qualified and acting Clerk of the County of Montcalm, Michigan (the "County") do hereby certify that the foregoing is a true and complete copy of Resolution 2008-03 adopted by the Board of Commissioners at a regular meeting on the 28th day of January, 2008, the original of which is on file in my office. Public notice of said meeting was given pursuant to and in compliance with Act No. 267, Public Acts of Michigan, 1976, as amended, including in the case of a special or rescheduled meeting, notice by posting at least eighteen (18) hours prior to the time set for the meeting.

IN WITNESS WHEREOF, I have hereto affixed by official signature on this 28th day of January, 2008, A.D.



Kristen Millard, County Clerk
County of Montcalm, State of Michigan